

- ❖ Show all work
- ❖ No notes, books, or calculators allowed.
- ❖ Write answers in lowest terms when possible

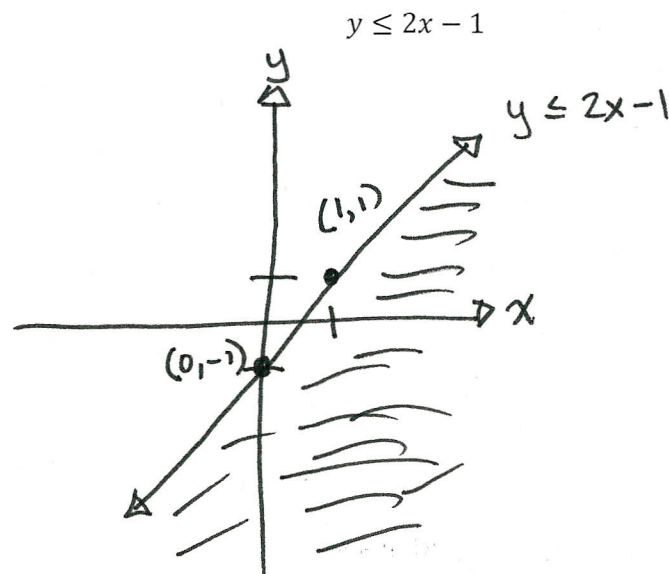
1. (4 points) Show that (1,3) satisfies the system of equations below.

$$\begin{cases} y = 2x + 1 \\ y = -x + 4 \end{cases}$$

$$3 = 2(1) + 1 \rightarrow 3 = 3 \checkmark$$

$$3 = -1 + 4 \rightarrow 3 = 3 \checkmark$$

2. (6 points) Graph the linear inequality.



Test Point (0,0)

$$0 \leq 0 - 1$$

$$0 \leq -1 \text{ False}$$