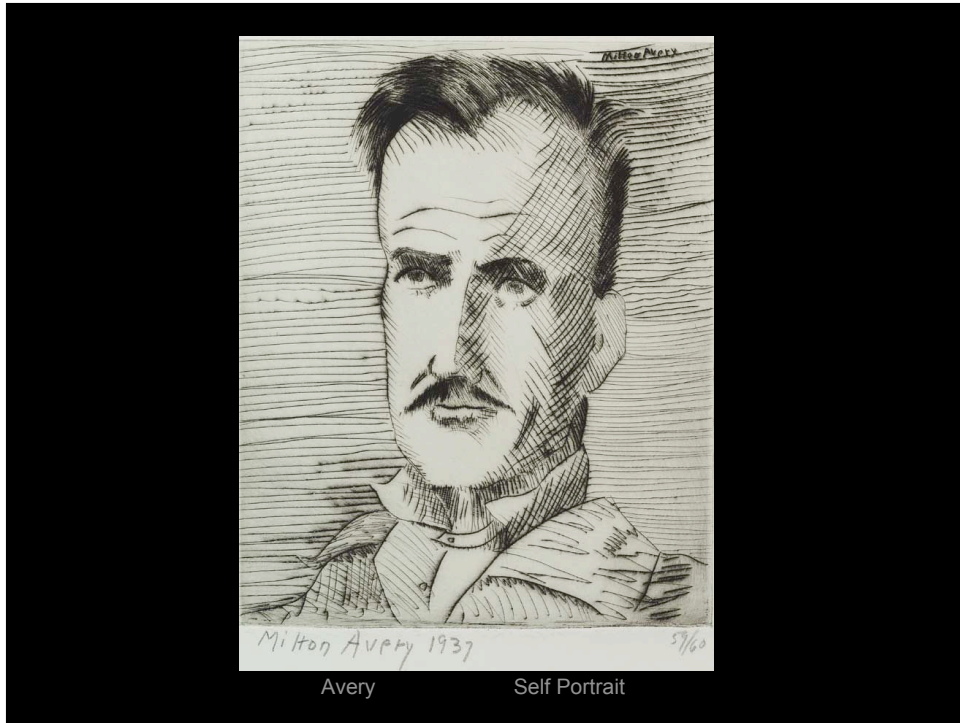


DRAWINGS IN INK

*LINE* ...that most descriptive, abstract, emotive, and elusive of art elements.



The Avery portrait is a drypoint etching. A drypoint needle dragged across a metal plate incised the lines. The needle raises a burr that holds ink irregularly as the plate is wiped and printed. The result is a characteristic ragged appearing line with a slight soft edge or blurring.



Romare Bearden

*The Street*

felt tip pen

The street in this Bearden drawing is comprised of neighborhood folk made of mostly contour type lines of about the same width. Does this make the people seem to belong to the street?



Aubrey Beardsley

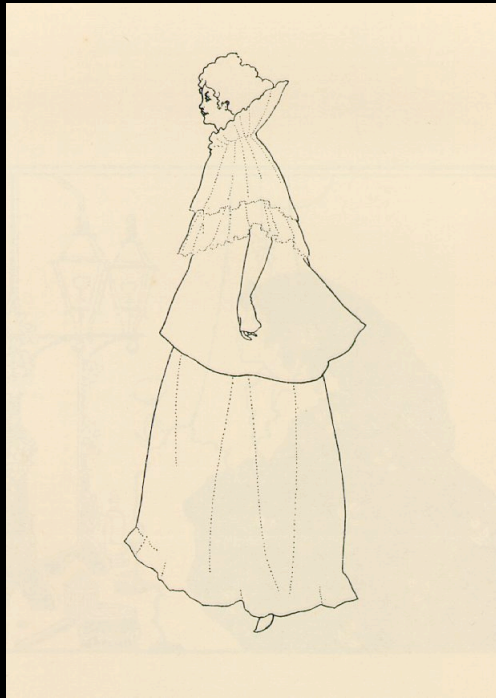
The Beardsley drawing has layers of ink and a technique called stippling. This is the process of making dots either in a regular or irregular pattern, and the denser the dots become, the darker the area reads.



Beardsley *Peacock Skirt*

Aubrey Beardsley made a significant impression on English art at the turn of the 19th century. He died of tuberculosis by the age of 25. He had a lasting affect on many artists who followed him. He achieved fame early, illustrating many books and magazines during his brief life. His drawings were not mere illustrations, but formed an integral part of the English Aesthetic Movement, an art movement closely aligned to the Art Nouveau movement in France.

Beardsley

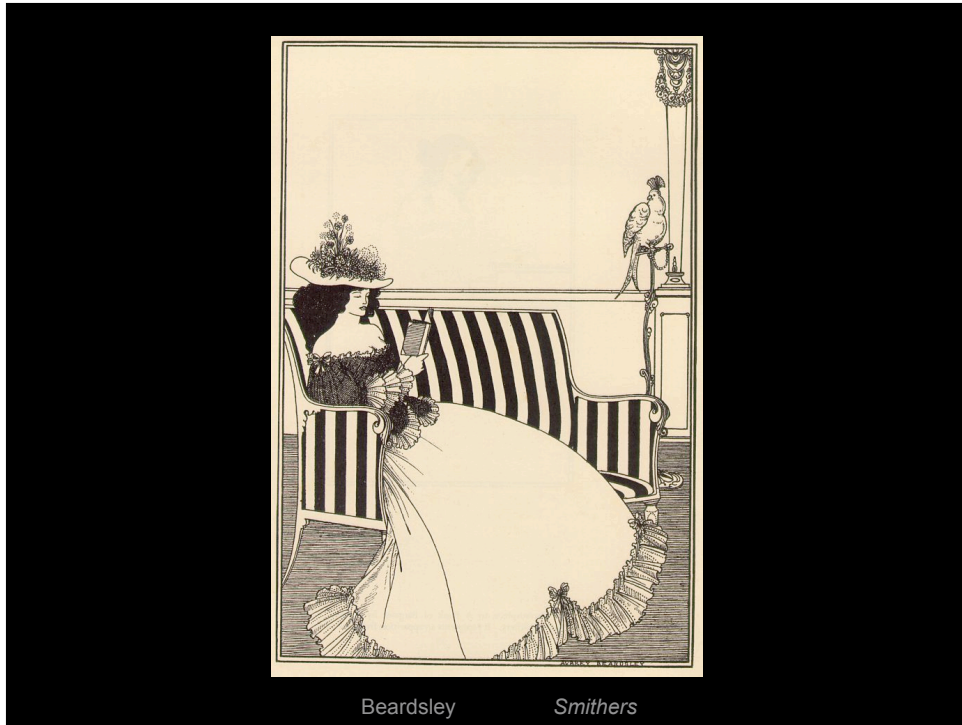


He liked to contrast dense areas with mostly empty ones, and darks with mostly lights. How would you characterize this contrast of line qualities?



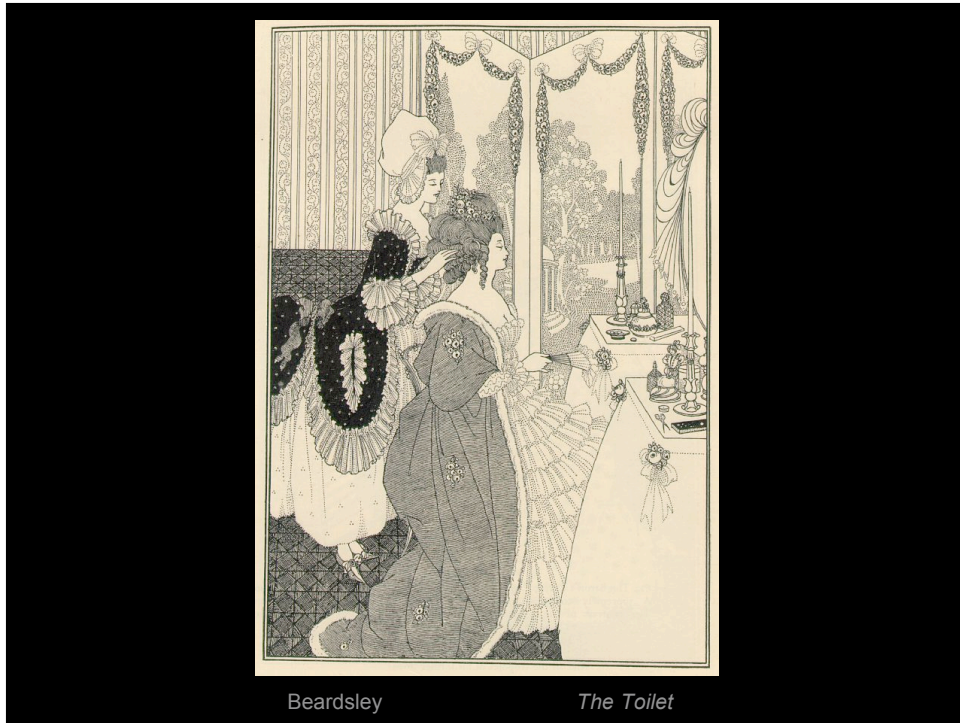
Beardsley

Savoy No. 1



Notice how Beardsley uses empty space as a foil to the dense textural development of lines in the lower half of the composition.





The stippled development of the landscape in the background, on the multi-sided screen, is a delightful visual counterpoint to the dense floor and costumes of the foreground figures.



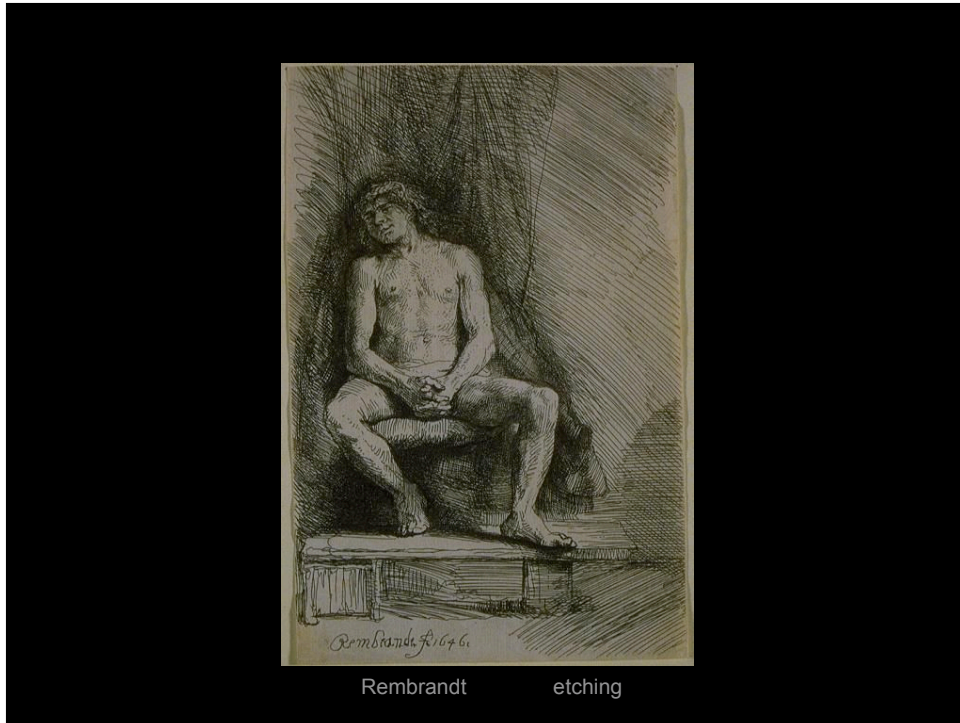
John Byrne

Byrne uses a calligraphic line here. That means the line reveals a thick and thin movement across its length. What does this type of line accentuate?



Travis Charest

Here the artist, Charest, builds a dramatic black void to contract the delicate linear detail of the foreground figures.



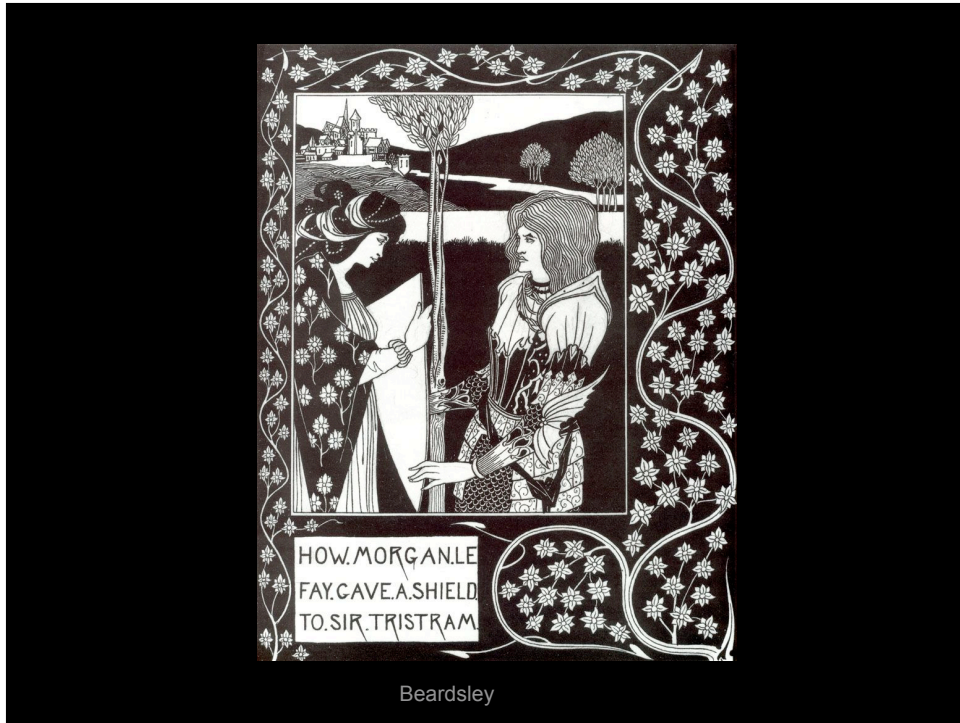
The use of overlaid bundles of line in the Rembrandt add a transparent and light quality to his etching.



Beardsley

*How King Arthur Saw The Questing Beast*

The Beardsley drawing could be contemporary. It shows a complex blend of line qualities.



The asymmetrical border here helps prevent a boring symmetry of the double portrait..





Beardsley

*Dreams*

Look how the line punctuates these figures and adds to the overall sense of movement and chaos.



Beardsley





Beardsley *The Battle of the Beaux and the Belles*

A great example of using black line on white ground and the reverse.



More of the interchange of white on black and the reverse. I think this use of approximate symmetry is anything but monotonous.