

Value - the systematic use of a range of tones to create plasticity, space, emphasis, rhythm, and/or mood.



Goya Giantess Aquatint

Goya uses an extreme key, strong darks and spot lighted tones to cast this moonlight upon his figure.

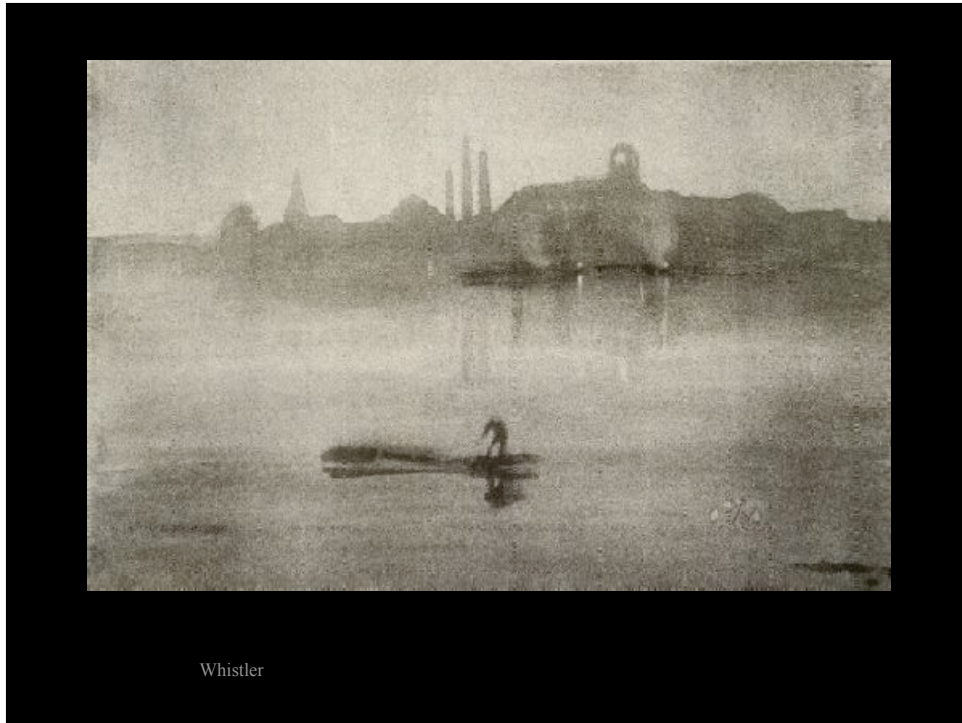


In this pastel drawing, the artist plays with the repetition of forms through the cast shadows to emphasize the shallow space and to push the forms even more directly into the face of the viewer.



Maxfield Parish

Parish uses a reversal of values in this work. The higher contrasting tones are receding into space and the high key values are in the foreground. What is the effect of that decision?



Whistler

Whistler uses atmospheric perspective to create this foggy scene. The more distant forms approach middle value gray.



This is one of my drawings. I used the strong value contrast on the rings to push them into the near space, and to further obscure the sense of reality in this magical revelation. Most of the remaining values are in a neutral key.



Another of my drawings uses a darker key with spot light high key tones, and not many in between. The fly woman is 'walking the plank' with the adeptness of a bug.



Phoenix Amphitrite graphite and prisma pencil

The addition of color here shifts the values into a different dialogue with the image. It feels a little like the old black and white movies that were later colorized. It makes the black and white feel odd and more stark than they would have been without the addition of the color.



Looking for the Cat graphite drawing

This image, drawn from a dream, is mostly executed in neutral tones to suggest atmospheric perspective as a gentle yet texturally busy space.



Again the drama of the values has a stage produced simulation. The artist here has become the magician.



Prelude to a Revolution graphite drawing

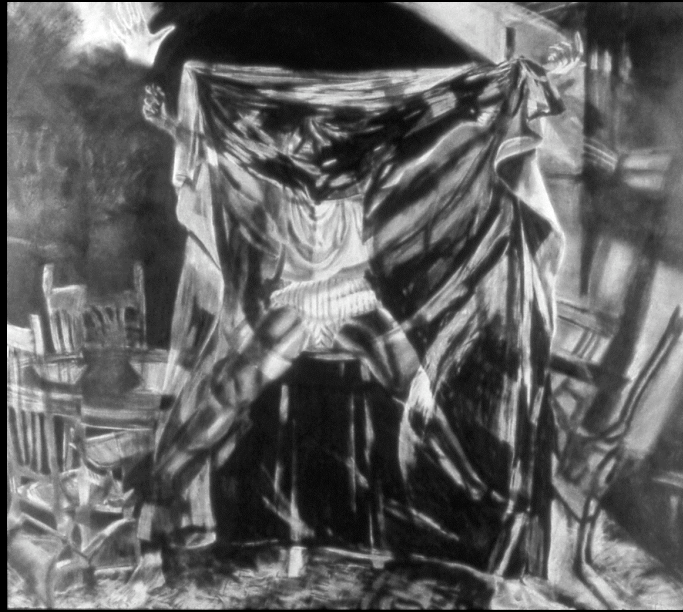
Despite its title, the values suggest far more of a quiet mood.



Tabletop Chessplayer

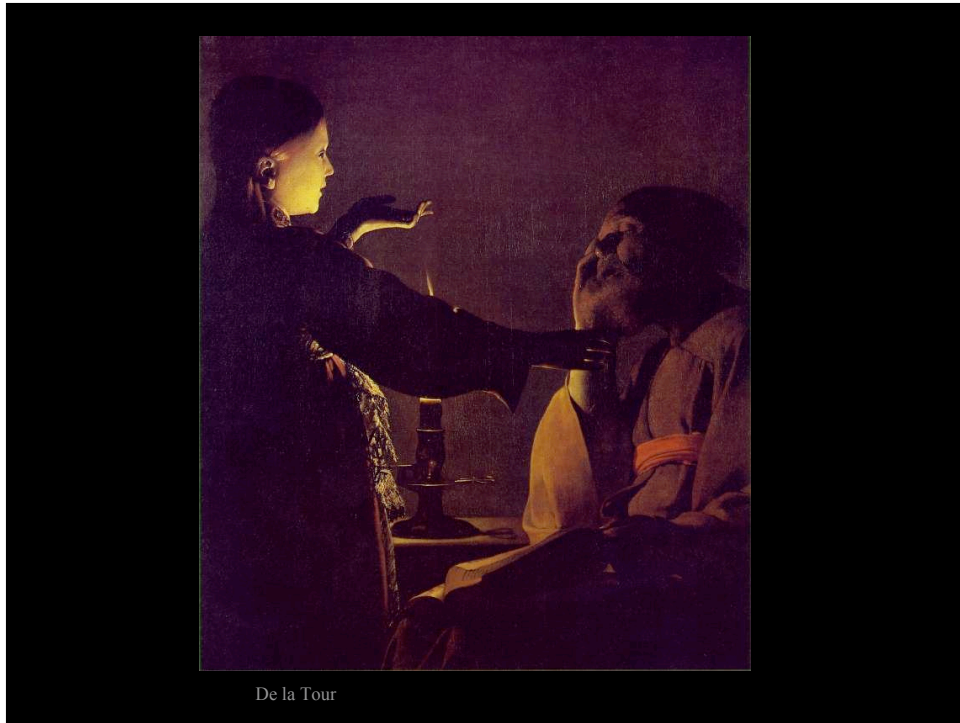
graphite drawing

The gilded table could be portrayed best with a strong contrast of values. The figure has subtler shifts to contrast with the space.



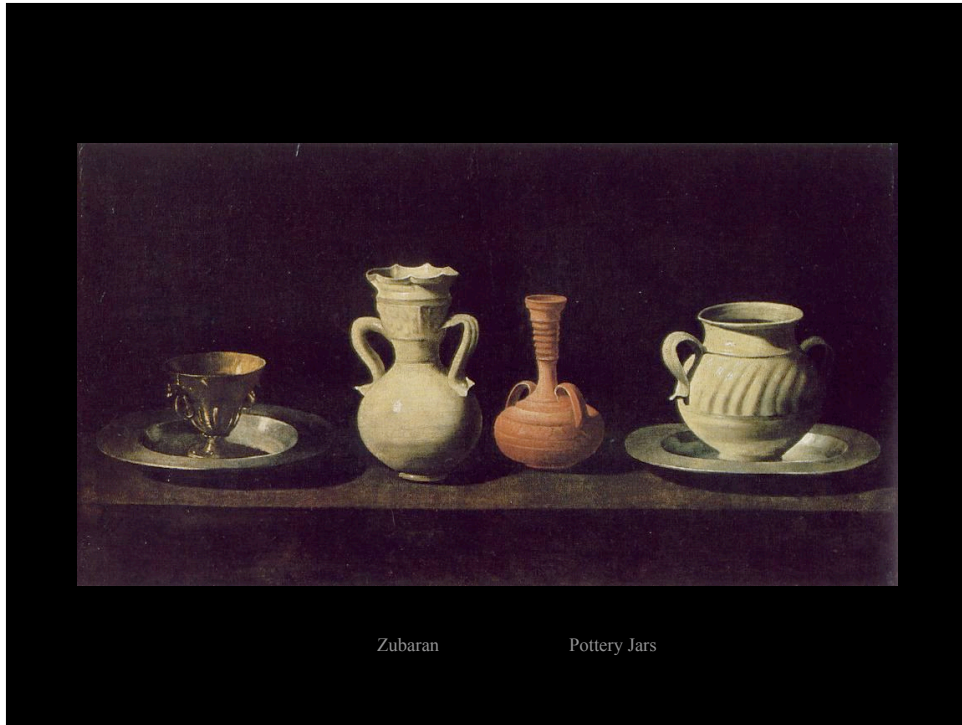
The Assistant was Fired graphite drawing

The contrasting darks here reveal the tension the title implies.



De la Tour

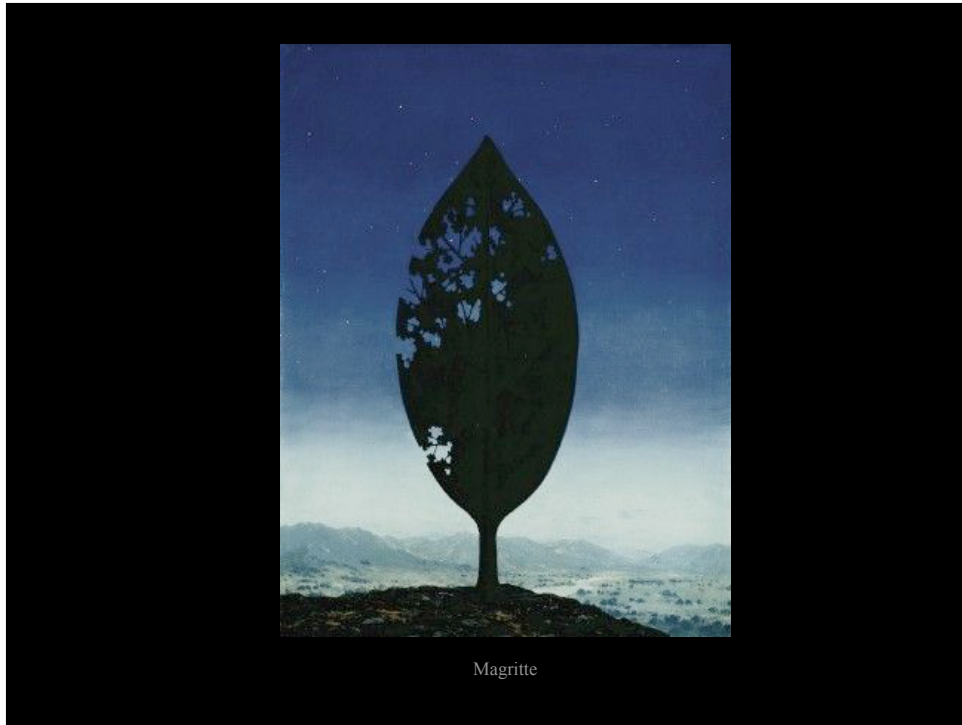
De la Tour masterfully paints an illuminated scene in the middle distance of the relationship of figures to the background. What type of key is this?



Zubaran

Pottery Jars

Values clearly play an important role in this painting and the artist successfully convinces us of the textures of each vessel.



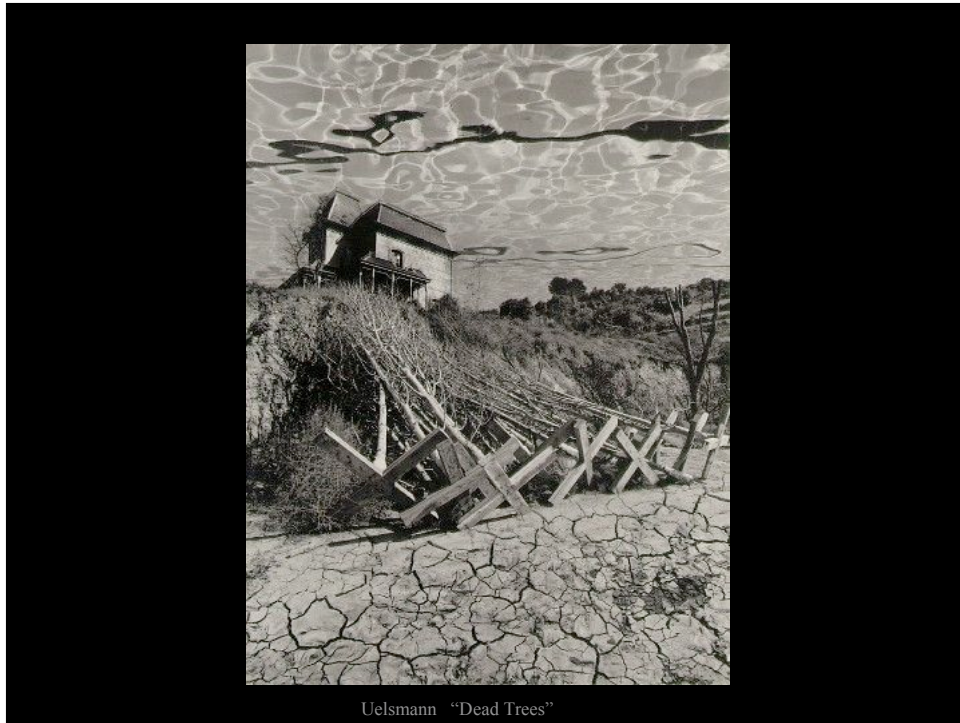
Significant atmospheric perspective is at work here.



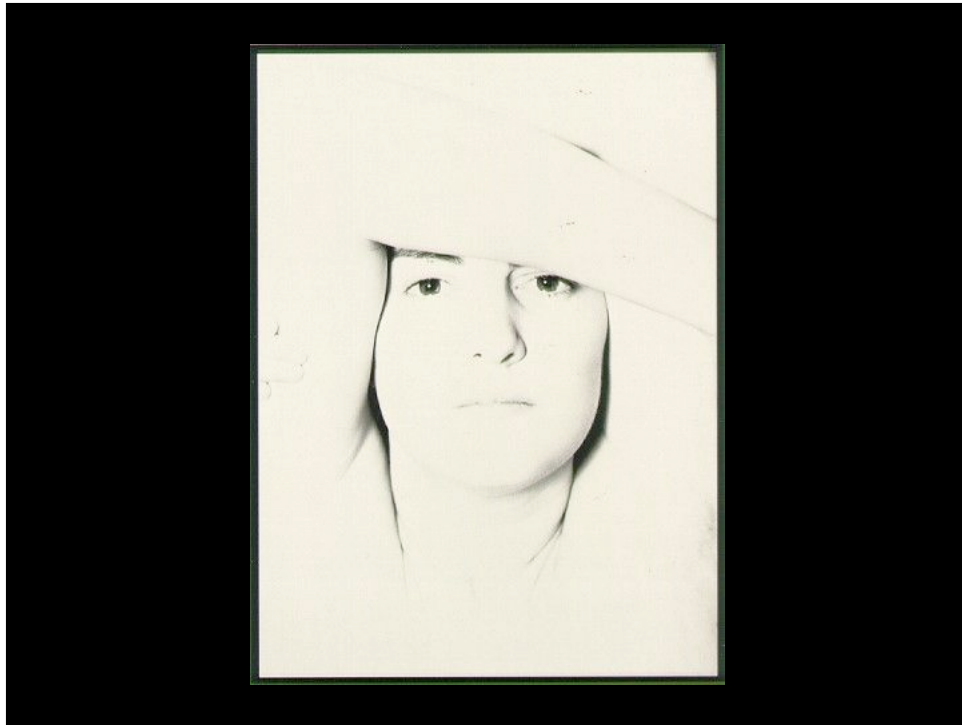
Thiebaud

Cakes

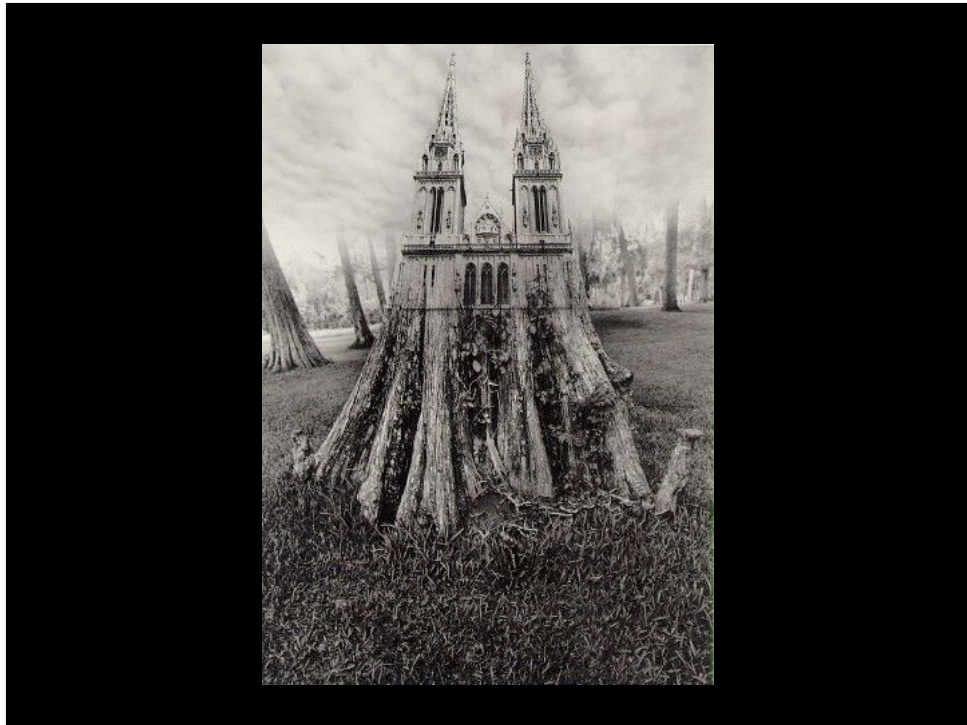
Does the value structure here affect your attitude about these cakes?



Uelsmann pioneered such photographs as composites originally made in the darkroom with traditional chemistry, not Photoshop processes. He used multiple negative exposures and manipulated the photos in the darkroom. This is a great example of the seamless quality that your Photoshop Value project could encompass.



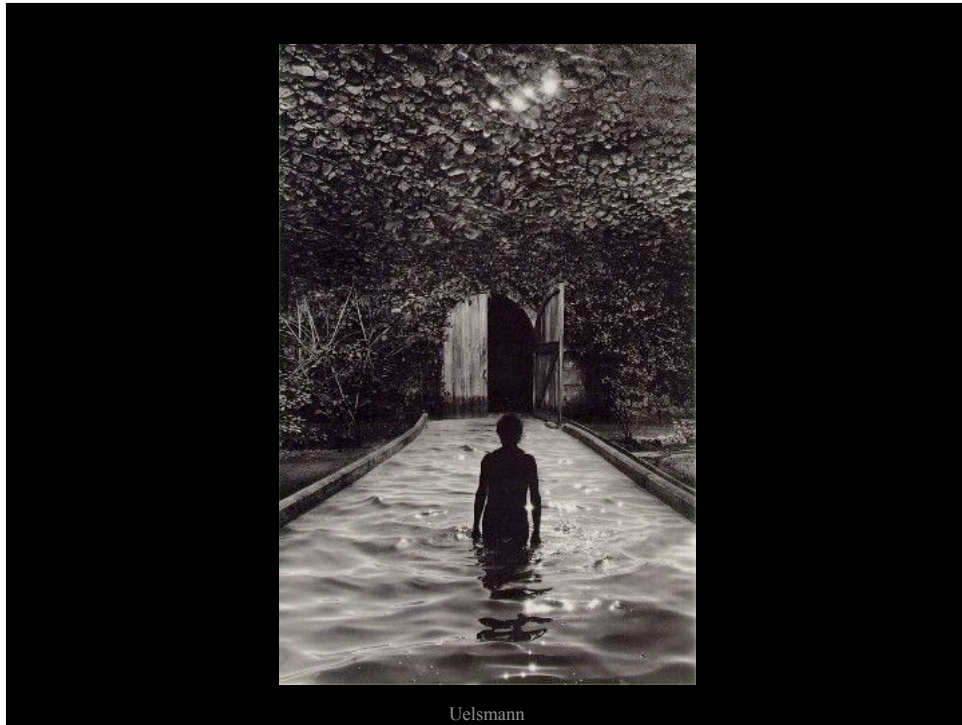
Callahan uses minimal values in this photograph. This is a good example of open values and what gestalt?



Uelsmann photograph



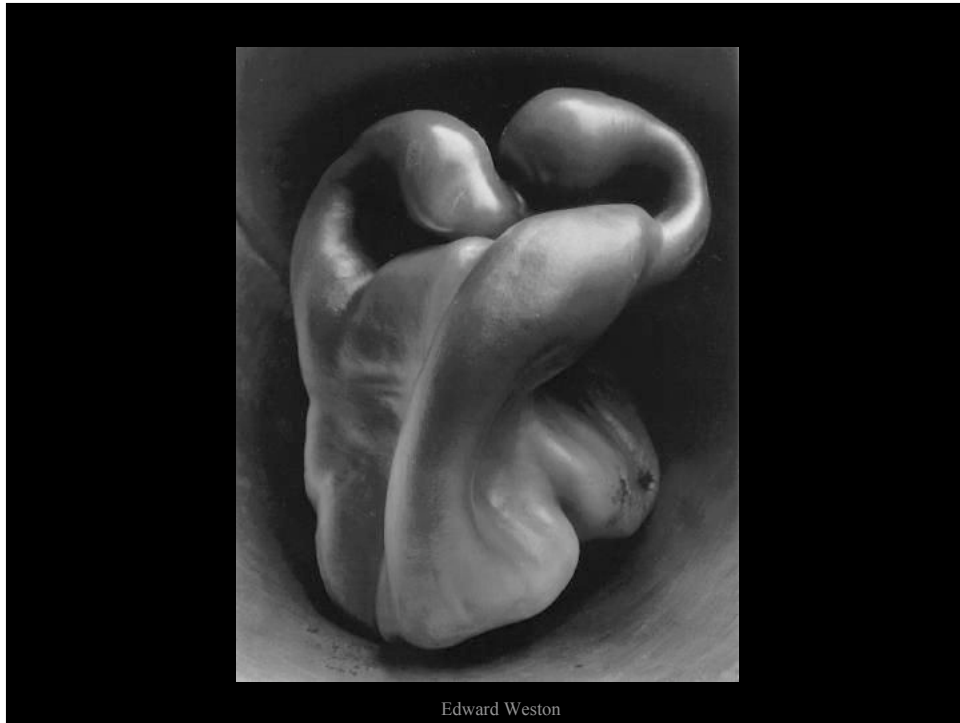
Uelsmann



Uelsmann - go to his website to view more of his work.
<http://www.uelsmann.com/flash.html>



Uelsmann



Weston imbues this green pepper with sensuality. It is not only a stunning visual statement in terms of point of view, but also in terms of the exquisite range of richly exaggerated tones.



Minor White photographs this ocean scene with the same appeal as the Weston pepper.