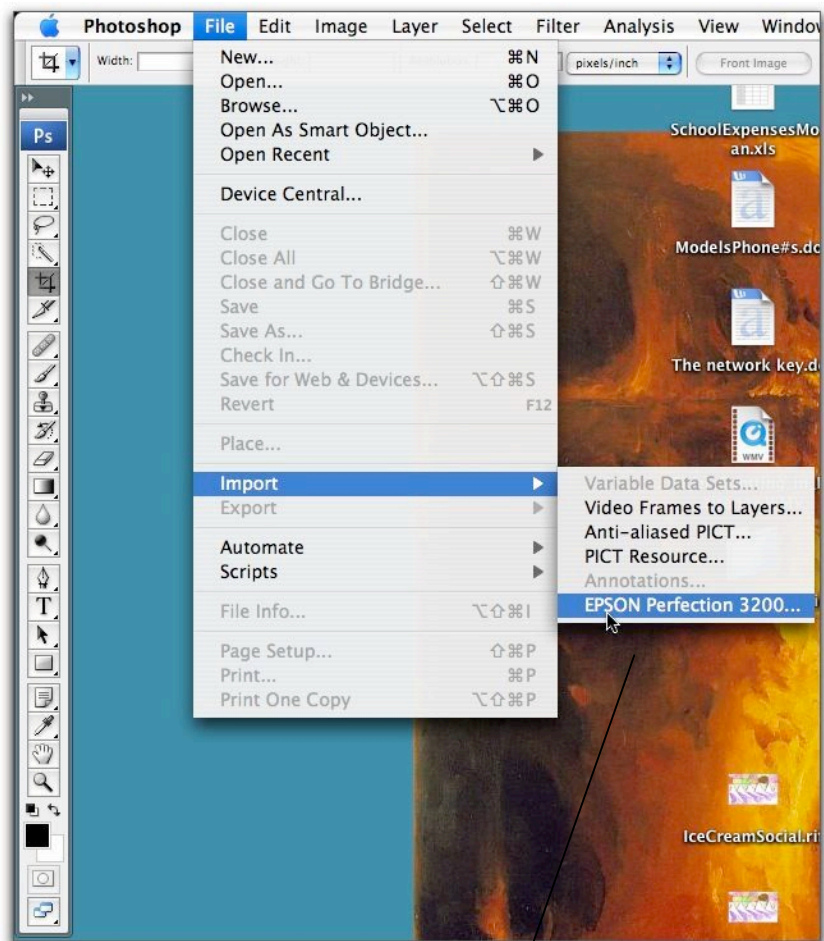


Design Fundamentals

ART 320 Online

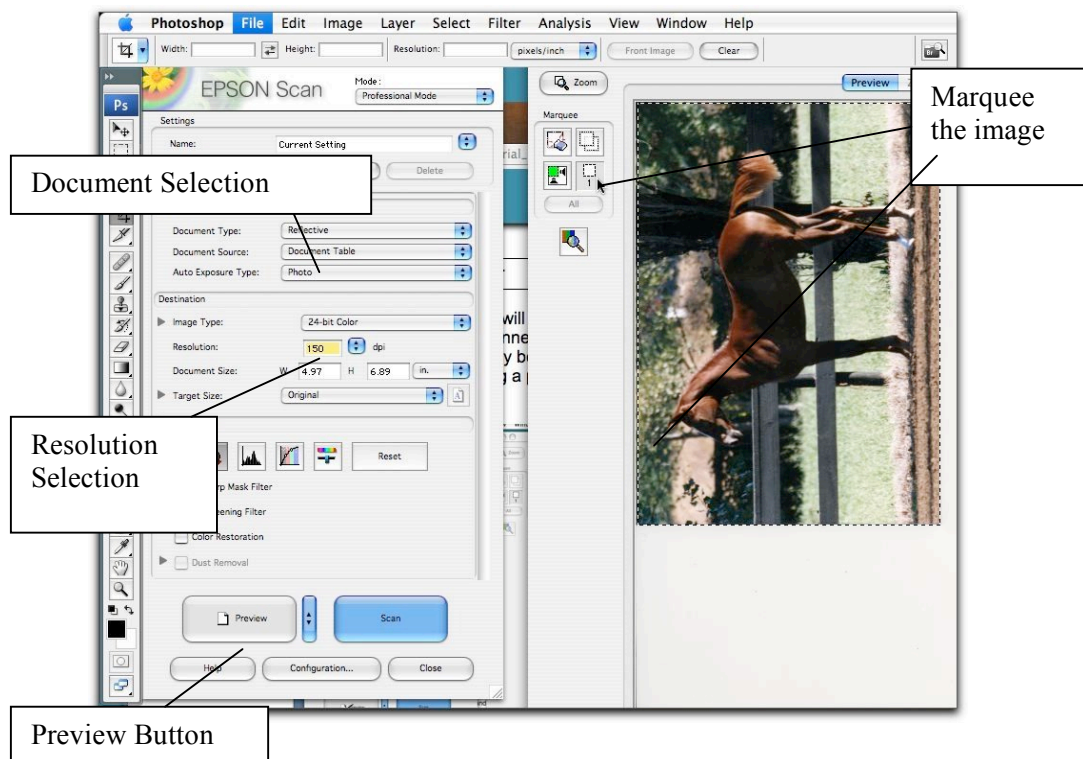
Tutorial on Scanning

- Open Photoshop CS3 and turn on the scanner connected to your computer.
- Under File>Import, you will see the name of the scanner in the drop-down window list. Select your scanner. Scanners have different interfaces and software options. You need to familiarize yourself with your individual scanner, but in general, they work as follows:



Selecting the scanner

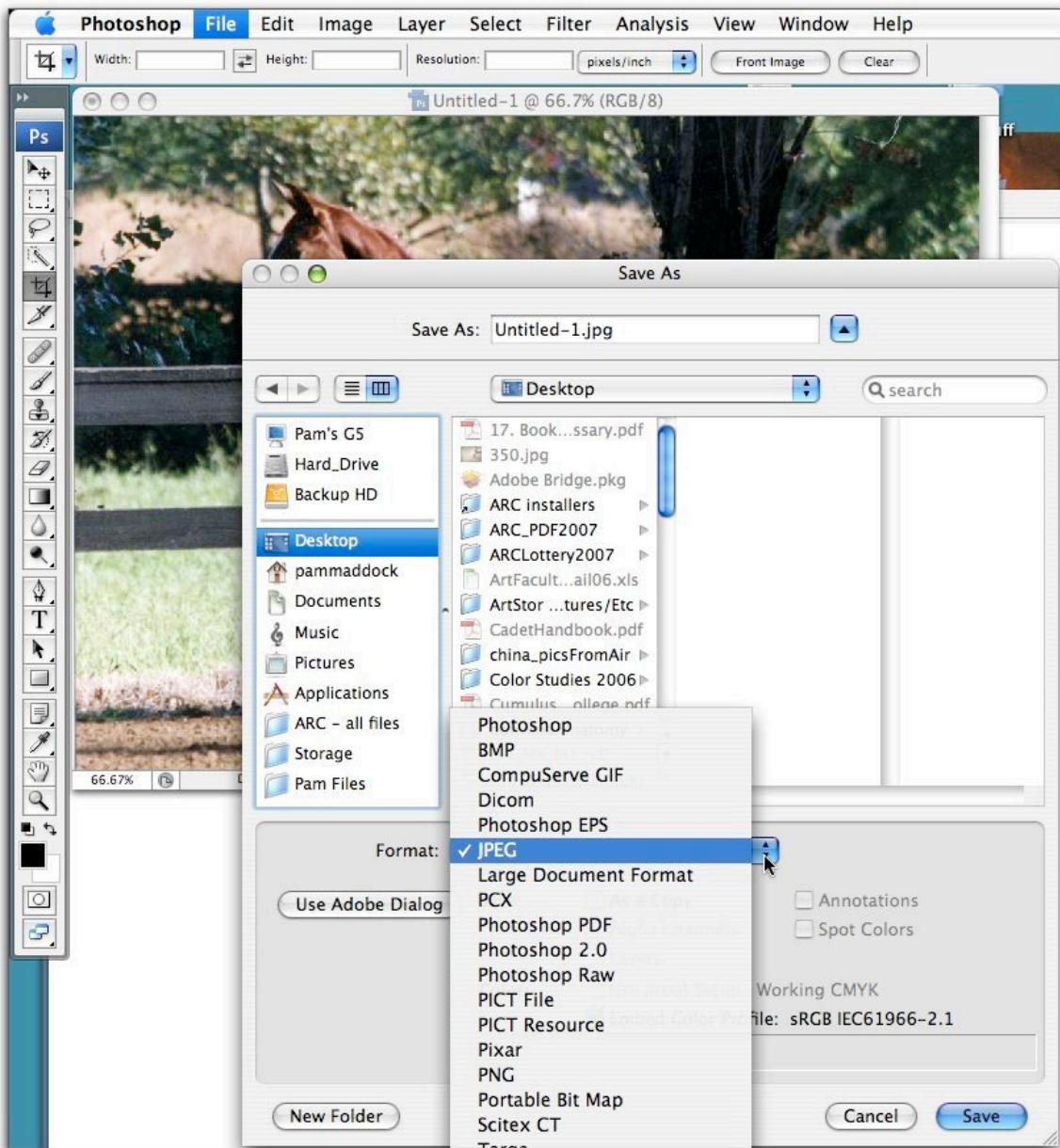
The scanning software will open and you will be able to make various settings according to the type of software that comes with your scanner. Before you make the scan you should make sure the type of document is selected. This may be magazine (for your drawing) or paper document or something similar. If you were scanning a photograph, that will also be a choice.



Select the type of "resolution" for your scan. This is generally between 150 -400 DPI (dots per inch). This will depend on whether you want to be able to print your file into a fairly large format. For our purposes in the Project 3 - Emphasis, 150 DPI is plenty. You only need to be able to see your object well enough to trace it for the assignment.

Press "Preview" if your scanner has that option. The image will appear in the scanner's software window, and you can then take the "marquee" or selection tool and drag it to frame the image, so you aren't scanning the whole bed of the scanner.

Then chose "Scan" and the file will open into Photoshop when the scan is finished. Under File>Save you can name the image and place it into whatever folder you have made to contain it...on your desktop, or into your working class files for Project 3. This file will be a .psd, which is the native file extension of Photoshop. You could also change that File>Save to be another extension if you prefer .jpg. That can be imported into Illustrator easily also and it may be a slighter smaller file size.



When you are ready to bring your file into the Project 3 Emphasis Stage One file, with Illustrator open and a new file chosen, select File>Place. You'll see a window to browse to your file and select it, after which you're ready to begin work on Project 3. Once you PLACE your scanned image into Illustrator, follow the Project 3 Tutorial on the Emphasis Assignment. (You'll be converting your scan into a template, first of all).